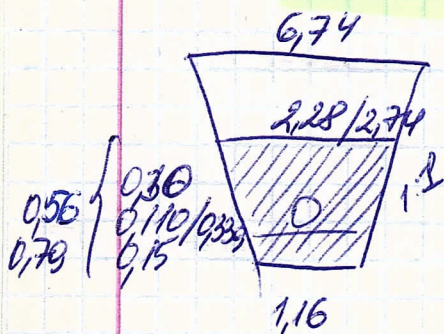


Решение задачи 14 №6.



$$L = 109 - 17 = 92 \text{ м}$$

$$L_{\text{фгм}} = 15 \text{ м}$$

$$\text{вер. } (2.75 + 2.75 + 3.0 + 2.80 + 2.60 + 2.57 + 2.57 + 2.60 + 2.13) : 9 + 0.15 = 2.79$$

$$S_{\text{ф}} = \frac{1.16 + 6.74}{2} \cdot 2.79 = 11.02$$

$$V_{\text{ф}} = 11.02 \cdot 92 = 1013.84 \text{ м}^3$$

$$V_{\text{гп}} = 3\% = 30.42$$

$$V_{\text{гфг}} \text{ по } 1 \text{ м} = 11.02 \cdot 2 = 22.04 \text{ м}^3$$

$$V_{\text{нч}} = 1013.84 - 30.42 - 22.04 = 961.38$$

$$V_{\text{нч}}^{\text{нч}} = 1.16 \cdot 0.15 \cdot 92 = 16.01 \text{ м}^3$$

$$S_{\text{бат}} = \frac{1.16 \cdot 2.28}{2} \cdot 0.56 = 0.96$$

$$V_{\text{бат}} = 0.96 \cdot (92 - 15) = 73.92$$

$$S_{\text{нчнч}} = 0.96 - \frac{0.15 \cdot 1.16}{0.17} - \frac{0.11^2 \cdot 3.14}{4} = 0.78$$

$$V_{\text{нчнч}} = 0.78 \cdot (92 - 15) = 69.06$$

См. решение задачи 14 №6

длина  
 $S_{\text{бат}}$   
 $V_{\text{бат}}$   
 $S_{\text{нчнч}}$   
 $V_{\text{нчнч}}$   
 $V_{\text{гп}}$   
 $V_{\text{гфг}}$   
 $V_{\text{нч}}$   
 $M_{\text{бат}} =$   
 $10$   
 $=$



280 + 260 +  
213) : 9 + 0,15 =

$$\begin{aligned} S_{\text{bot}} &= \frac{1,16 + 2,74}{2} \cdot 0,79 = 1,54 \\ V_{\text{bot}} &= 1,54 \cdot 15 = 23,1 \\ S_{\text{new up}} &= 1,54 - 0,15 \cdot 1,16 - \frac{0,34^2 \cdot 3,14}{4 \cdot 0,09} = 1,28 \\ V_{\text{new up}} &= 1,28 \cdot 15 = 19,2 \text{ m}^3 \\ V_{\text{груды}} &= 1013,84 \\ V_{\text{нrc}} &= 1013,84 - 73,92 - 23,1 = 916,82 \end{aligned}$$

$$\begin{aligned} M_{\text{от}} &= 995 \cdot 1 + 1 \cdot 2 + 9675 \cdot 1 + 0,4 \cdot 1 + 0,25 + 905 \cdot 1 + (0,003 \cdot 3 + 0,0025 \cdot 1 + 0,0045) \cdot 24 = \\ &= 10,012 \cdot 1 + 9,012 \cdot 2 + 9,032 \cdot 3 + 9,041 \cdot 4 + 9,031 \cdot 5 + 9,061 \cdot 6 + 9,31 \cdot 7 \cdot 24 = \\ &= -0,168 + 4,325 + 1,253 = 5,578 \text{ т} + 0,168 = 5,746 \text{ т} \end{aligned}$$

979